



REC# #: 752790

RECORDED 5/8/2019 AT 1:17 PM BK# 2620 PG# 1832
Debra K. Lee, CLERK OF LARAMIE COUNTY, WY PAGE 1 OF 1

STATE OF WYOMING CORNER RECORD

(In compliance with the CORNER PERPETUATION AND FILING ACT, Wyoming Statutes, 1997 Section 33-29-140, et. seq., and the Rules and Regulations of the Board of Registrations for Professional Engineers and Professional Land Surveyors)

NORTHEAST CORNER SECTION 3, T. 18 N., R. 63 W., 6TH P.M., LARAMIE COUNTY, WYOMING

GLO: SET A GRANITE STONE 18X10X8, 12 IN. DEEP WITH 4 MARKS ON THE WEST AND 2 ON THE EAST SIDES FOR CORNER TO SECTIONS 2,3,34 AND 35.

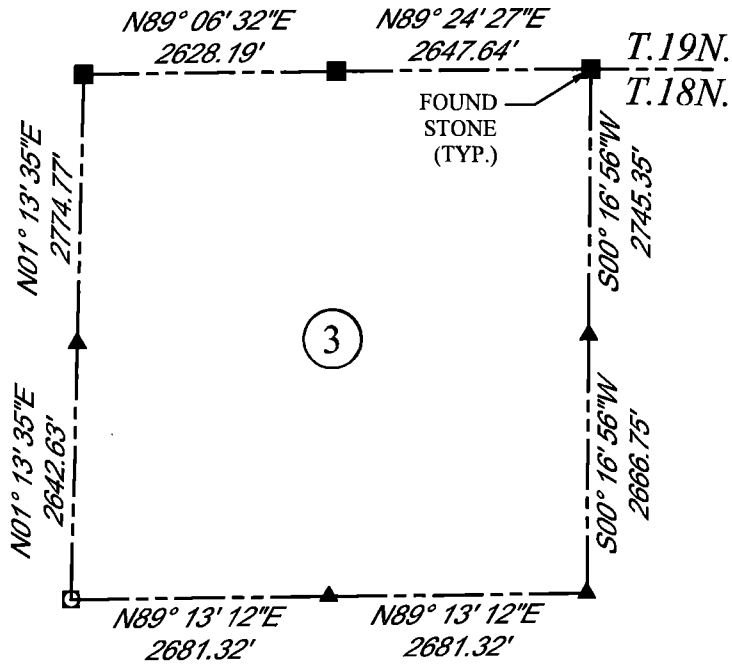
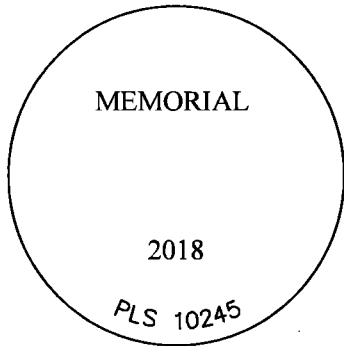
FOUND: FOUND FIRM SET GRANITE STONE, APROX. 18X10X8. 4 NOTCHES FOUND ON WEST FACE, 2 NOTCHES ON EAST FACE.



SCALE: NONE

NORTH DETERMINED BY
G.P.S OBSERVATIONS

SET 3.25" ALUMINUM CAP
ON #5 REBAR, STAMPED AS
SHOWN



LEGEND:

- FOUND BLM CAP
- FOUND USFS CAP
- FOUND STONE
- FOUND PRIVATE MONUMENT
- ◆ CALCULATED POSITION
- ▲ SET MONUMENT (LS10245)
- SECTION LINE

DATE OF FIELD WORK: 8/28/2018 OFFICE REFERENCE: MERIDEN

CROSS INDEX DIAGRAM

	1	2	3	4	5	6	7	8	9	10	11	12	13	14	15	16	17	18	19	20	21	22	23	24	25
A																									
B																									
C		6																							
D			5																						
E				4																					
F					3																				
G			7																						
H				8																					
J					9																				
K						10																			
L			18																						
M				17																					
N					16																				
O						15																			
P			19																						
Q				20																					
R					21																				
S						22																			
T			30																						
U				29																					
V					28																				
W						27																			
X							26																		
Y								25																	
Z									30																
	1	2	3	4	5	6	7	8	9	10	11	12	13	14	15	16	17	18	19	20	21	22	23	24	25

WOOD
2615 AVIATION DRIVE
SHERIDAN, WY 82801
PH: 307-675-6400



THIS CORNER RECORD WAS
PREPARED BY ME OR UNDER
MY DIRECTION AND
SUPERVISION,
SEAL AND SIGNATURE

